

**WORKING RELATIONS  
with  
PUBLIC OFFICIALS**

**Presented to  
49<sup>th</sup> County Auditors' Institute  
Training for New County Auditors  
May 8, 2007**

**Linda R Breazeale  
Retired Montgomery County Auditor**

# **WORKING RELATIONS With PUBLIC OFFICIALS**

## **I. Introduction**

**A. County organization-how it differs from “real world”**

**B. Independence vs teamwork**

## **II. Resources**

### **A. Knowledge**

- 1. Learn as much as possible**
- 2. Knowledge builds credibility**
- 3. Credibility earns trust**

### **B. Independence**

- 1. Learn to read/interpret statutes**
- 2. Seek input, but form own opinions**
- 3. Be consistent in application; allow for flexibility**

### **C. Communication**

- 1. Keep lines open**
- 2. 80% listening – 20% talking**
- 3. Know your audience**
- 4. Require complete, accurate AND timely info from staff**



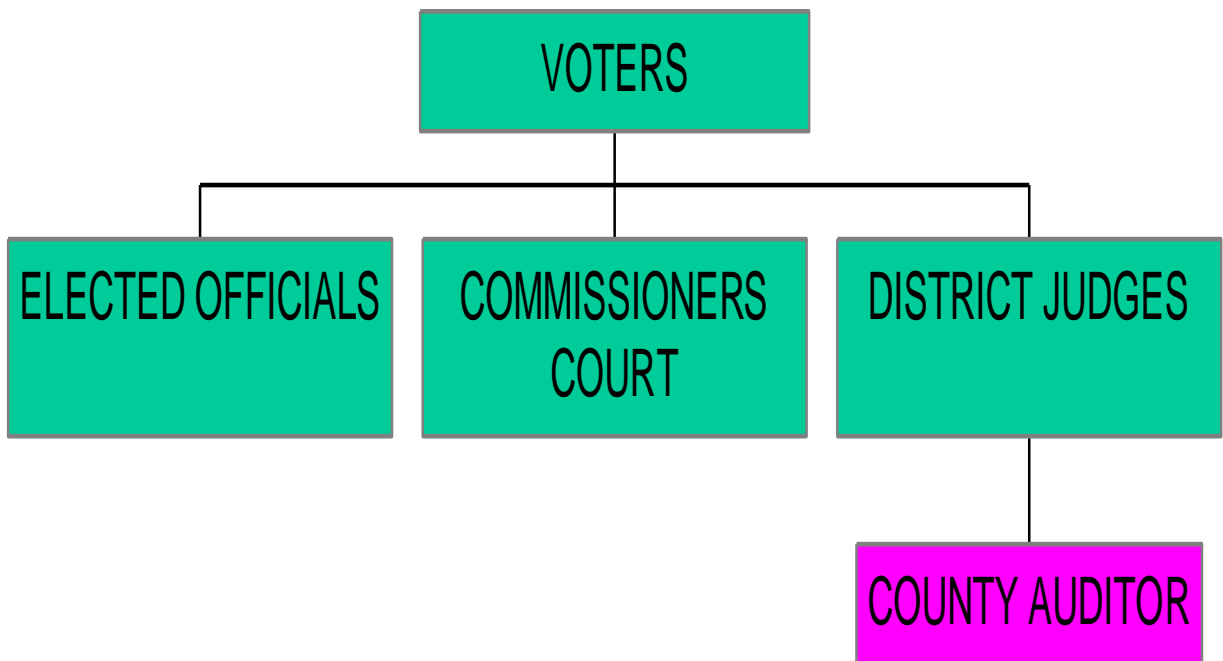
Working Relations  
with  
Public Officials

Presented  
to  
49th Annual  
County Auditors Institute

May 8, 2007  
Linda R. Breazeale

# Where does the Auditor “fit” in county government?

(Local Govt Code: Chapter 84.002)



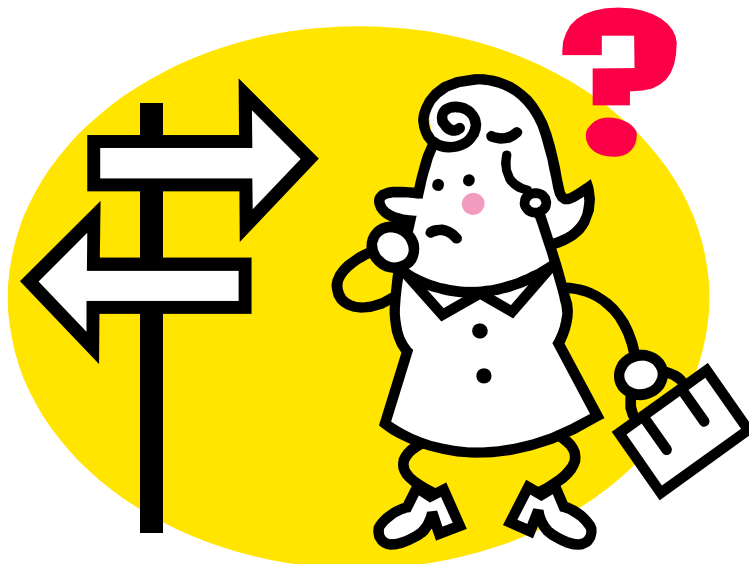
# Knowledge

1. Learn as much as possible
2. Knowledge builds credibility
3. Credibility earns trust



# Independence

1. Learn to read / interpret statutes
2. Seek input - form own opinions
3. Be consistent - be flexible



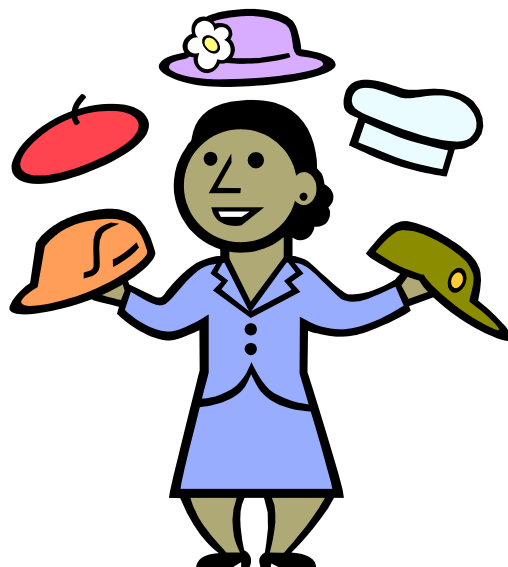
# Communication

1. Keep lines open
2. Remember “80/20” rule
3. Know your audience
4. Don’t forget the staff



# Politics

1. Keep it private
2. Choose sides carefully in the courthouse
3. Remember which hat you're wearing



# Most Important Relationship

1. Manage Stress
2. Avoid “martyrdom”
3. Trust yourself
4. “Best of the Best”

